



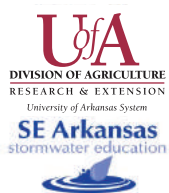
Protecting Water Quality From Construction Site Stormwater Pollution

Urban Stormwater Education Program Sponsored By:

Jefferson County
City of Pine Bluff
City of White Hall

University of Arkansas at Pine Bluff
Jefferson County Cooperative
Extension Service

The purpose of this program is to educate the public about the environmental impacts of stormwater runoff and to share ways residents can reduce the amount of pollutants going into our lakes, rivers, streams, and bayous.



The Arkansas Cooperative Extension Service offers its program to all eligible persons regardless of race, color, national origin, religion, gender, disability, marital or veteran status, or any other legally protected status, and is Affirmative Action/Equal Opportunity Employer.

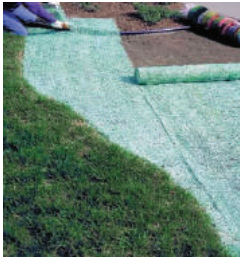
Water quality problems can originate from residential and commercial construction sites when stormwater runoff picks up and carries sediment, vegetation debris, discarded building materials, concrete truck washout, chemicals and litter from construction activity into storm drains. Storm drains do go to a wastewater treatment plant, but are released directly into nearby lakes, rivers, streams and bayous. Stormwater pollutants can have adverse effects on water quality and human health, harm or kill aquatic species and cause localized flooding.

Best Management Practices For Preventing Construction Site Stormwater Runoff Pollution

- Use Sediment Erosion Controls around the downslope perimeter of disturbed areas.



- Protect storm drain inlets.
- Reduce soil erosion by re-establishing vegetation quickly, utilizing mulches.



Construction sites disturbing greater than one acre of land must obtain and adhere to a federal stormwater permit under the Arkansas Department of Environmental Quality. Sites less than one acre of disturbance must still meet city stormwater ordinances and city stormwater management pollution prevention plan guidelines.

For more information about Urban Stormwater Education, contact the Jefferson County Cooperative Extension Service Office:

870.534.1033